

**larson® & larcove®**

# **standard**

## **Colour Chart**

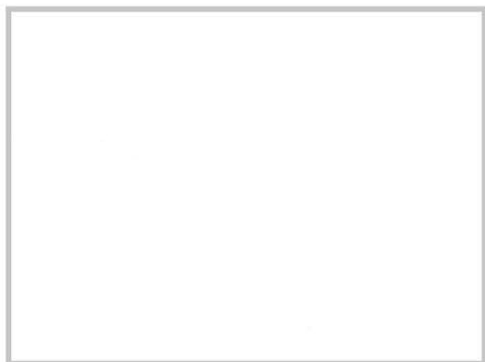
Transforms ideas into reality



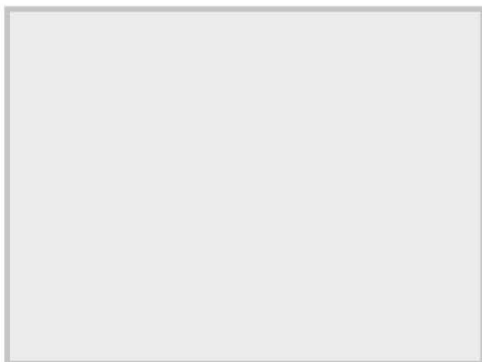
**Alucoil®**  
Grupo Alibérico

Przedstawiciel w Polsce  
Copal Sp. z o.o.  
ul. Sikorskiego 78  
64-980 Trzcianka  
tel. 67 216 67 67  
[www.copal.com.pl](http://www.copal.com.pl)

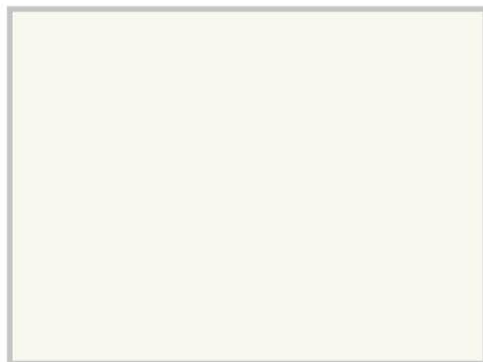
# larson® & larcove® A2



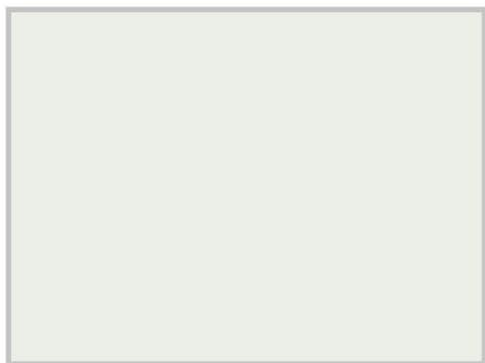
SIGNAL WHITE - 9003 -



METALLIC WHITE ✨ - PVdF 3L -



TRAFFIC WHITE - 9016 -



PURE WHITE - 9010 -



CREAM WHITE - 9001 -



CREAM



LIGHT GREY - 7035 -



SILVER METALLIC ✨



SUNRISE SILVER ✨



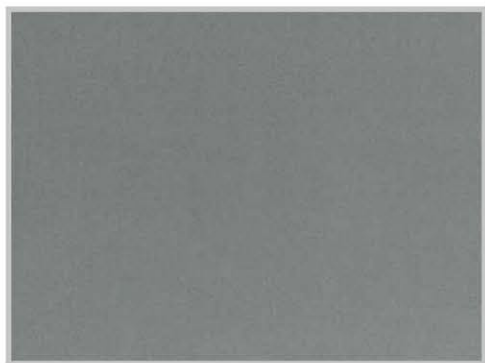
WINDOW GREY - 7040 -



SMOKE METALLIC ✨



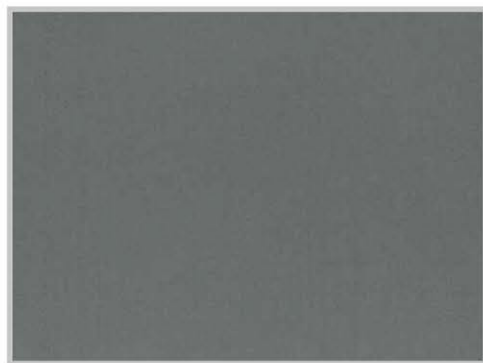
BRILLIANT METALLIC ✨



GREY METALLIC ✨

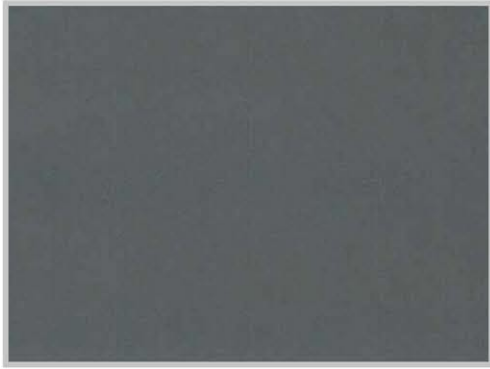


DUSTY GREY - 7037 -

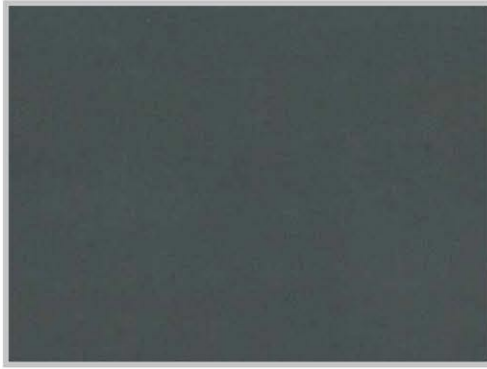


LEAD GREY - PVdF 3L -

*Transforms ideas into reality*



SLATE GREY - 7015 -



BASALT GREY - 7012 -



GRAPHITE GREY 2



GRAPHITE GREY - 7024 -



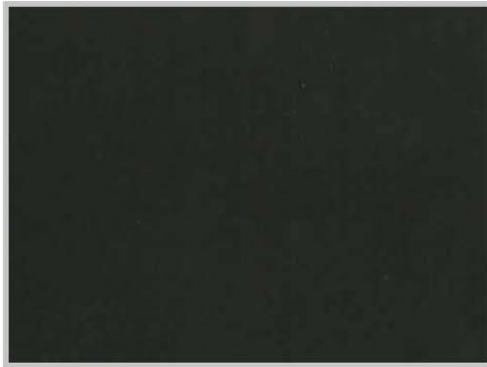
UMBRA GREY - 7022 -



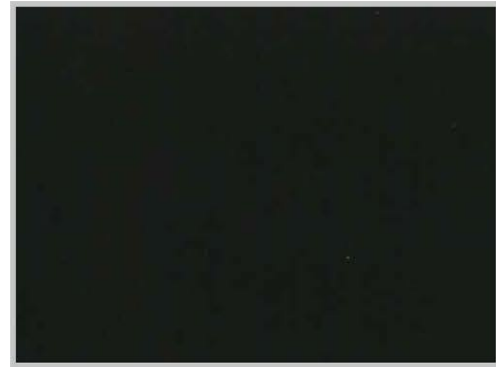
ANTHRACITE GREY - 7016 -



MANGANESE ✨



BLACK GREY - 7021 -



DARK GREY METALLIC ✨



JET BLACK - 9005 -



SILK GREY - 7044 -



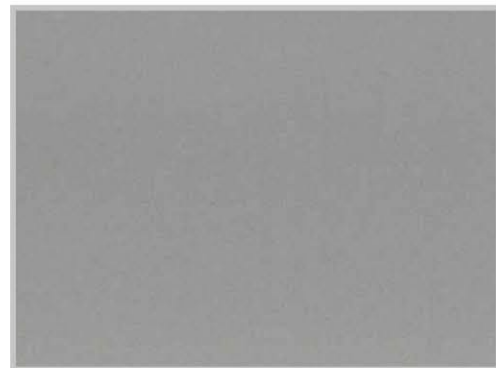
LIGHT IVORY - 1015 -



BRONZE METALLIC ✨



PEARL BEIGE - 1035 -

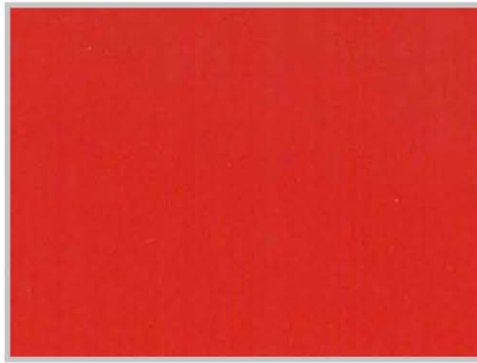


PEARL MOUSE GREY - 7048 -

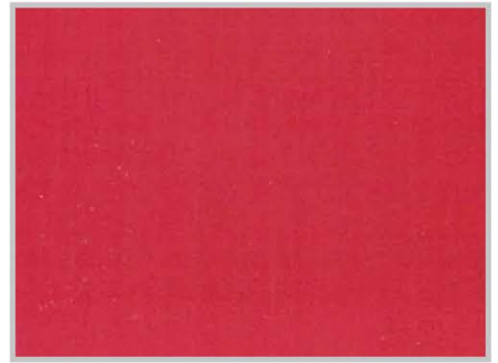
# larson® & larcocore® A2



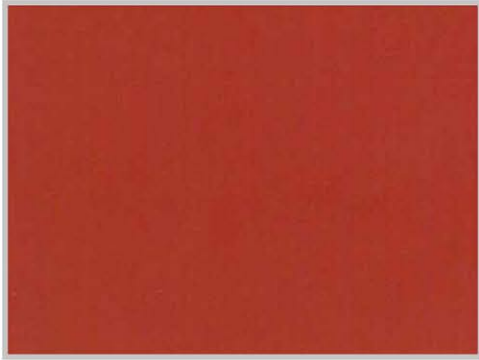
FLAME RED - 3000 -



TRAFFIC RED - 3020 - PVdF 3L -



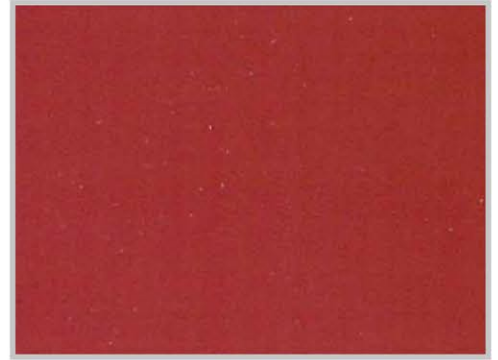
SIGNAL RED - 3001 -



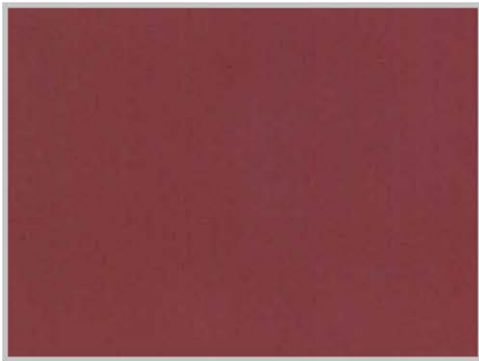
FERRARI RED - PVdF 4L -



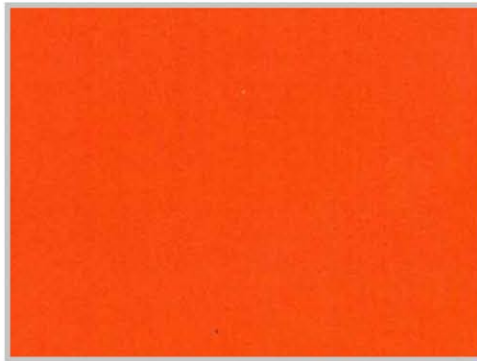
ORIENT RED - 3031E - PVdF 3L -



RUBY RED - 3003 -



PURPLE RED - 3004 -



PURE ORANGE - 2004 -



RED ORANGE - 2001 -



CHAMPAGNE METALLIC ✨



GOLD METALLIC ✨



BRILLIANT COPPER MET. ✨ - PVdF 3L esp -



COPPER METALLIC ✨



COPPER 1968 ✨



COPPER BROWN - 8004 -

# larson® & larcure® A2



GREY BROWN - 8019 -



YELLOW - 1021 -



SIGNAL YELLOW - 1003 -



PATAGONIA GREEN



BC GREEN



YELLOW GREEN - 6018 -



MOSS GREEN - 6005 -



ULTRAMARINE BLUE - 5002 -



METALLIC BLUE ✨



VIOLET BLUE - 5000 -



STEEL BLUE - 5011 -



BC MAGENTA - PVdF 3L -

**Alucoil®** ofrece 3 variantes, fundamentadas en los más estrictos parámetros de calidad.

Pintura líquida PVdF 70% Kynar 500 en Bicapa con primer COASTAL 31µ. (Cualquier color de la carta RAL, a partir de 600 m<sup>2</sup>).

Pintura líquida PVdF 70% Kynar 500 en tricapa 37µ. (Cualquier color de la carta RAL, a partir de 600 m<sup>2</sup>).

Esta es una carta de colores con acabados aproximados a los reales, se recomienda realizar la elección final sobre muestras físicas de panel.

✨ COLORES METALIZADOS

SUBRAYADOS=COLORES ESTÁNDAR EN STOCK

**Alucoil®** offers 3 alternatives based in the strictest parameters of quality.

Liquid PVdF Kynar 500 70% paint in 2 layers with COASTAL primer 31µ. (Any RAL chart colour from 600 m<sup>2</sup>).

Liquid PVdF Kynar 500 70% paint in 3 layers 37µ. (Any RAL chart colour from 600 m<sup>2</sup>).

The colours in this colour chart are very close to reality. However, **Alucoil®** advises to select the final colour over physical samples.

✨ METALLIC COLOURS

UNDERLINED=STANDARD COLOURS ON STOCK

**larson® & larcocore®**

**standard**

**Colour Chart**

Transforms ideas into reality

**[www.alucoil.com](http://www.alucoil.com)**

Polígono Industrial de Bayas  
C/ Ircio. Parcelas R72-77  
09200 Miranda de Ebro, Burgos  
**SPAIN**

Tel.: +34 947 333 320 Fax: +34 947 324 913  
[info@alucoil.com](mailto:info@alucoil.com)



**Alucoil®**  
Grupo Alibérico

Przedstawiciel w Polsce  
Copal Sp. z o.o.  
ul. Sikorskiego 78  
64-980 Trzcianka  
tel. 67 216 67 67  
[www.copal.com.pl](http://www.copal.com.pl)

**larson® & larcocore®**

# metals

Colour Chart  
Transforms ideas into reality



**Alucoil®**

Grupo Alibérico

Przedstawiciel w Polsce  
Copal Sp. z o.o.  
ul. Sikorskiego 78  
64-980 Trzcianka  
tel. 67 216 67 67  
[www.copal.com.pl](http://www.copal.com.pl)

# larson metals® & larcove® A2 metals

Aluminium Composite Panel

Aluminium Honeycomb Panel



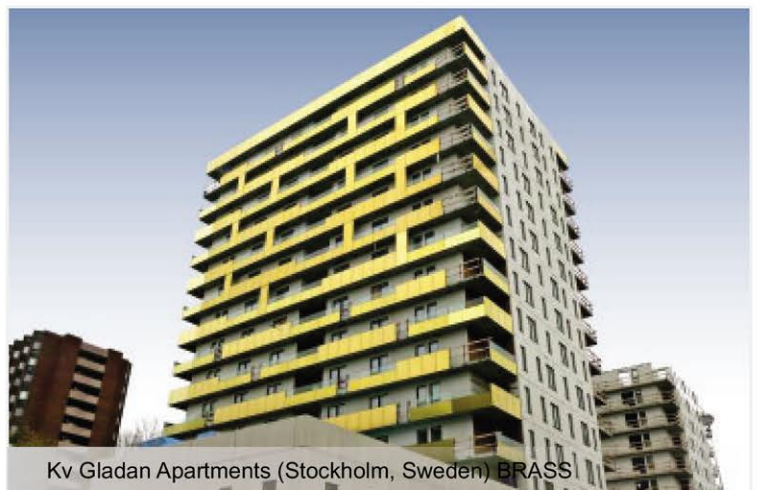
Aquarium (Gijón, Spain) STAINLESS STEEL



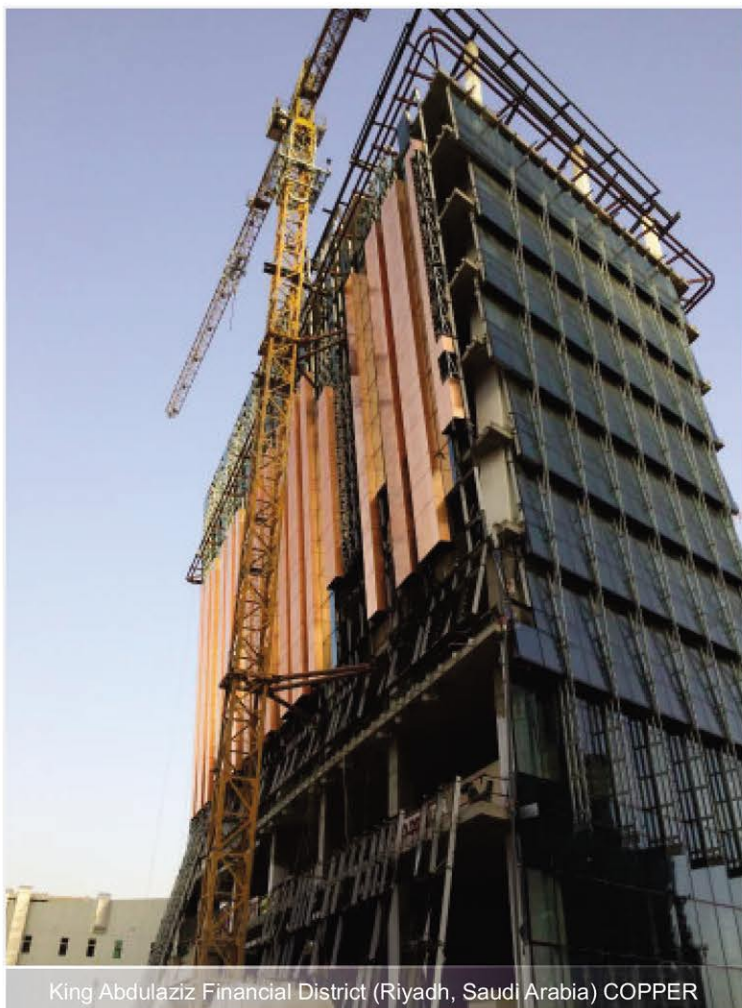
Hotel Camélia (Guimarães, Portugal) COPPER



Housing (Madrid, Spain) ZINC



Kv Gladan Apartments (Stockholm, Sweden) BRASS



King Abdulaziz Financial District (Riyadh, Saudi Arabia) COPPER



Reina Sofia Museum (Madrid, Spain) STAINLESS STEEL



Noble metals such as **Stainless Steel**, **Copper**, **Brass** and **Zinc** are shown in their natural appearance. The lack of treatment makes these composites the ideal ecological solution and provides the sensation of liveliness from the distinctive nature's finest elements. Lightness and flatness **Alucoil**'s panels.



Zinc Blue (only **larcore**\*)



Zinc Ebano (only **larcore**\*)



Zinc Brown (only **larcore**\*)



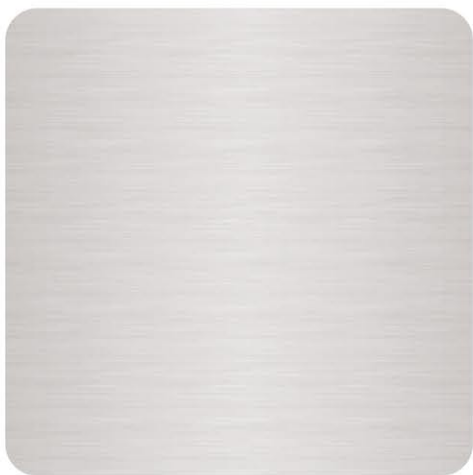
Zinc Green (only **larcore**\*)



Zinc Red (only **larcore**\*)



Zinc Gold (only **larcore**\*)



Stainless Steel 2D



Zinc Slate



Brass



Stainless Steel WF30 Brushed

# metals

Composite Panel  
Honeycomb Panel



Copper

**larson® & larcocore®**

# metals

## Colour Chart

Transforms ideas into reality

**[www.alucoil.com](http://www.alucoil.com)**

Polígono Industrial de Bayas  
C/ Ircio. Parcelas R72-77  
09200 Miranda de Ebro, Burgos

**SPAIN**

Tel.: +34 947 333 320 Fax: +34 947 324 913  
[info@alucoil.com](mailto:info@alucoil.com)



**Alucoil®**

Grupo Alibérico

Przedstawiciel w Polsce  
Copal Sp. z o.o.  
ul. Sikorskiego 78  
64-980 Trzcianka  
tel. 67 216 67 67  
[www.copal.com.pl](http://www.copal.com.pl)

**larson® & larcove®**

# specials

Colour Chart

Transforms ideas into reality



**Alucoil®**

Grupo Alibérico

Przedstawiciel w Polsce  
Copal Sp. z o.o.  
ul. Sikorskiego 78  
64-980 Trzcianka  
tel. 67 216 67 67  
[www.copal.com.pl](http://www.copal.com.pl)

# larson specials® & larcove® A2 specials

Aluminium Composite Panel

Aluminium Honeycomb Panel



Holo Green-Blue



Holo Red-Green



Holo Blue-Gold



Holo White-Silver



Holo Gold-Silver



Holo Grey-Pink



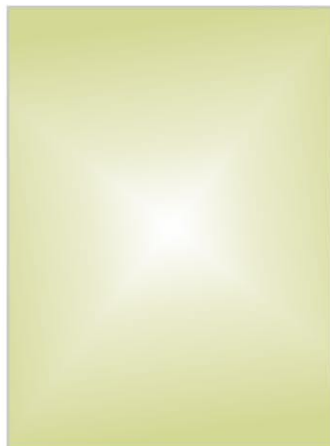
Holo White-Gold



Copper Patina



Mirror Architecture Silver



Mirror Gold



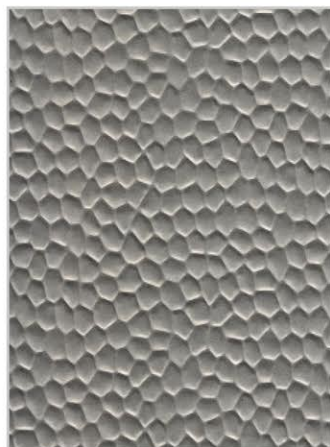
Travertino



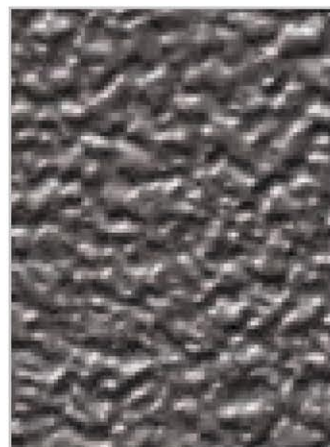
Glistening Sand



Basalt



Hammer 2 EX.



Stucco EX.



Corten Steel 2

## THE PANEL

Special Design & Effects is a range of composite panels that provides special finishes, designed for projects which aim to highlight the façade as these colours break with the regular range of colours, used for metallic claddings. It is formed by composite panels with finishes on **PVdF** with **COASTAL PRIMER, HQP, FEVE, Textured HQP** and **PVD**.

Consult possibilities for **larcore®** Honeycomb panel.



Anodized Autumn



Anodized Silver



Anodized Dark Grey



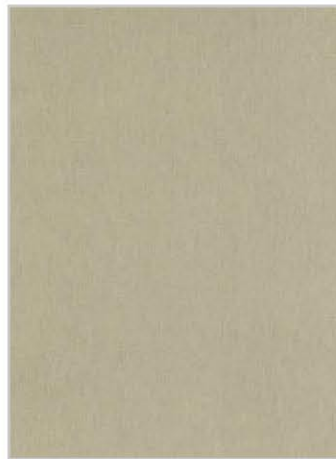
Anodized Art Nouveau Gold



Anodic Brushed Glossy



Anodic Brushed Matt



Alunatural Gold B. 60 G EX.



Alunatural Titanium B. 10 G EX.



Alunatural Orange Gold Glossy



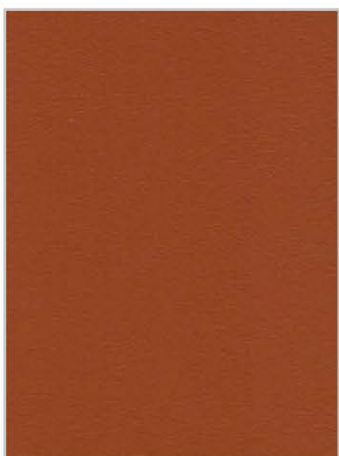
Alunatural Champagne B.



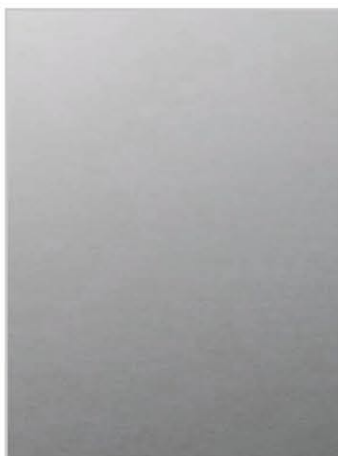
Oxide 1 EX.



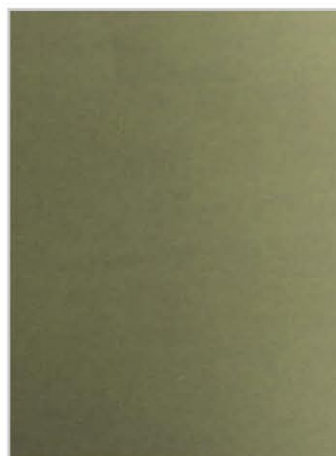
Oxide 2 EX.



Triana Brown FT EX.



Real Anodized 8µ Natural



Real Anodized 8µ Bronze



Real Anodized 8µ Champagne

**larson® & larcove®**

# specials

Colour Chart

Transforms ideas into reality

**[www.alucoil.com](http://www.alucoil.com)**

Polígono Industrial de Bayas  
C/ Ircio. Parcelas R72-77  
09200 Miranda de Ebro, Burgos  
SPAIN

Tel.: +34 947 333 320 Fax: +34 947 324 913  
[info@alucoil.com](mailto:info@alucoil.com)



**Alucoil®**  
Grupo Alibérico

Przedstawiciel w Polsce  
Copal Sp. z o.o.  
ul. Sikorskiego 78  
64-980 Trzcianka  
tel. 67 216 67 67  
[www.copal.com.pl](http://www.copal.com.pl)

# Panel Composite de Aluminio

## Aluminium Composite Panel



Soluciones Para Fachadas Arquitectónicas  
Architectural Façade Solutions

# larson wood®



Przedstawiciel w Polsce  
Copal Sp. z o.o.  
ul. Sikorskiego 78  
64-980 Trzcianka  
tel. 67 216 67 67  
[www.copal.com.pl](http://www.copal.com.pl)

## Composición

**larson wood®** es un panel composite formado por dos láminas de aluminio, unidas por un núcleo mineral (FR) o polietileno (PE), con acabados madera de diferentes tonalidades, obtenidas por la aplicación de **pinturas HQP**. El avanzado proceso de fabricación ofrece una extraordinaria capacidad para el mecanizado, plegado, perforado, y curvado, sin perder sus características técnicas.

**larson wood®** transmite la calidez de la madera, con las ventajas propias de los composites **Alucoil®**, que destacan por la planimetría del producto. Al obtener el acabado exterior a partir del lacado en pintura **HQPE de alta calidad**, específicamente preparado para exteriores, posee una extraordinaria resistencia al envejecimiento en el tiempo.

## Composition

**larson wood®** is a composite panel formed by two aluminum sheets joined by a mineral filling core (FR) or polyethylene core (PE). It offers an extraordinary capacity for fabrication, routing, bending, perforation and curving without losing its technical characteristics.

**larson wood®** transmits the warmth of the timber with the advantages of **Alucoil's** composites, which stand out for their flatness. Due to the finish in a **HQPE** suitable for outdoor use, it is ensured to maintain the stability of the finish time.

- 1 Film protector - Protective film
- 2 Metal - Metal
- 3 Adhesivo - Bonding layer
- 4 Núcleo Mineral FR o Polietileno PE  
Mineral FR or Polyethylene PE Core
- 3 Adhesivo - Bonding layer
- 2 Metal - Metal



Hotel GEFER (Wrocław, Poland)

## Propiedades técnicas

Núcleo
Espesor total del panel (mm)
Espesor del aluminio (mm)
Peso del panel (Kg/m²)
Ancho estándar (mm)
Momento de inercia (cm⁴/m)
Rigidez E¹ (KNcm²/m)
Módulo de elasticidad (N/mm²)
Carga a la rotura (N/mm²)
Límite de elasticidad (N/mm²)
Alargamiento a la rotura (%)
Aleación del aluminio
Superficie lacada
Capas de pintura
Espesor de pintura
Imprimación de protección
Acabados estándar
Acabados bajo pedido
Clasificación de reacción al fuego

Polyethylene PE			Mineral FR		
3	4	6	3	4	6
0,5					
4,52	5,50	7,25	6,00	7,65	10,90
1000 - 1250 - 1500					
0,040	0,263	0,625	0,115	0,307	0,704
700	1846	4400	810	2150	4930
17542			15707		
42,66			43,26		
31,38			30,69		
18,95			5,62		
5005					
HQPE					
3 - 4					
36±6µ					
OK					
WENGE - COLONIAL RED - WALNUT - BEECH - SUNGLOW					
OAK - AHORN - ITALIAN MCD WALNUT					
UNE 23717 - NF P92-501 (M1)			UNE EN 13501 (B-s1,d0)		

## Technical data

Core
Total thickness (mm)
Aluminium thickness (mm)
Panel weight (Kg/m²)
Standard width (mm)
Moment of inertia (cm⁴/m)
Rigidity E¹ (KNcm²/m)
Modulus of elasticity (N/mm²)
Ultimate tensile strength (N/mm²)
Elasticity limit (N/mm²)
Elongation (%)
Aluminium alloy
Paint surface
Paint layers
Paint thickness
Anticorrosive pretreatment
Standard finishes
Finishes upon request
Reaction to fire test





Walnut



Ahorn



Wenge



Oak



Colonial Red



Italian MCD Walnut



Beech



Sunglow

# larson wood®



## www.alucoil.com

Polígono Industrial de Bayas  
C/ Ircio. Parcelas R72-77  
09200 Miranda de Ebro, Burgos  
SPAIN

Tlf: +34 947 333 320 Fax: +34 947 324 913  
info@alucoil.es



**Alucoil®**  
Grupo Alibérico

Przedstawiciel w Polsce  
Copal Sp. z o.o.  
ul. Sikorskiego 78  
64-980 Trzcianka  
tel. 67 216 67 67  
www.copal.com.pl